

2180 SQ FT
3 BEDS
2.5 BATHS

BIRKLEY 2



MAIN: 979 SQ FT

UPPER: 1201 SQ FT

Sterling HOMES

A QUALICO Company

ELEVATIONS



COLONIAL



CONTEMPORARY
ARTS & CRAFTS



CONTEMPORARY
PRAIRIE



CRAFTSMAN



FARMHOUSE



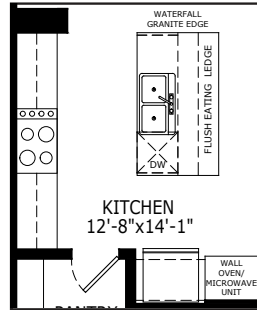
PRAIRIE



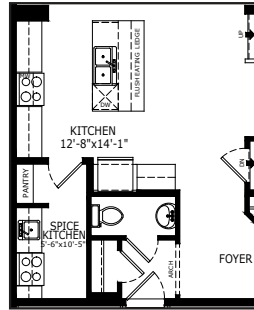
Scan here
for floorplan
options and
more

MAIN FLOOR OPTION

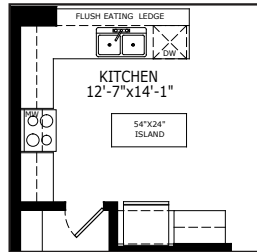
EXECUTIVE KITCHEN



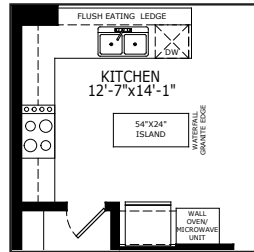
SPICE KITCHEN



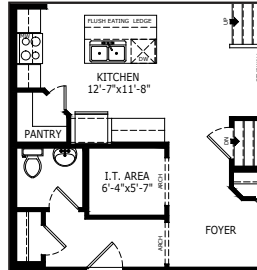
OPTIONAL KITCHEN 1



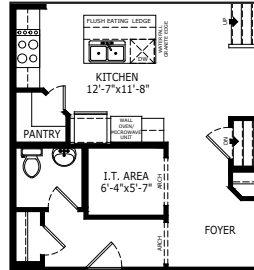
OPTIONAL KITCHEN 1
WITH EXECUTIVE KITCHEN



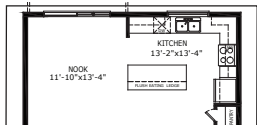
OPTIONAL KITCHEN 2



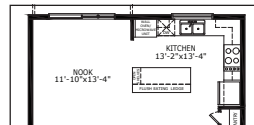
OPTIONAL KITCHEN 2
WITH EXECUTIVE KITCHEN



OPTIONAL KITCHEN 3

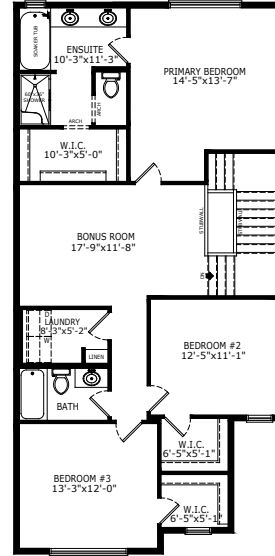


OPTIONAL KITCHEN 3
WITH EXECUTIVE KITCHEN

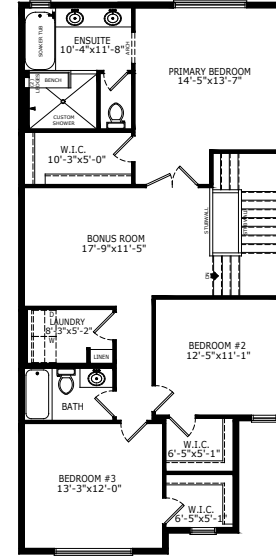


UPPER FLOOR OPTION

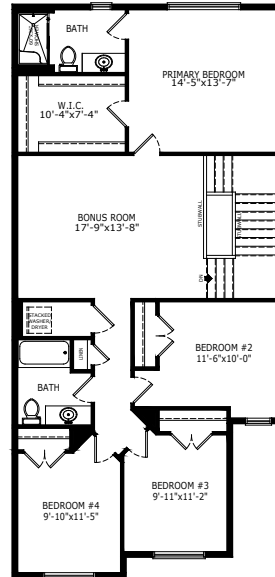
ENSUITE



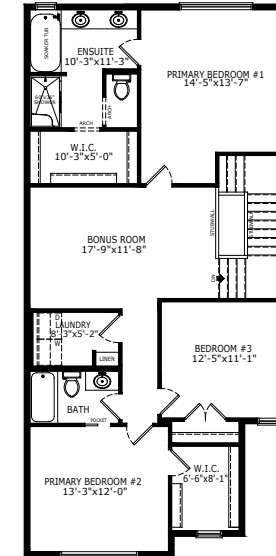
ENSUITE WITH CUSTOM SHOWER



4TH BEDROOM

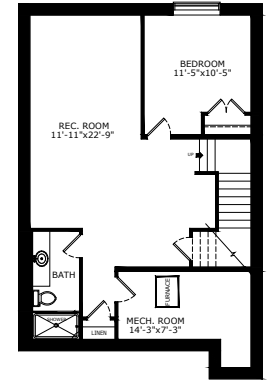


2ND MASTER BEDROOM
WITH ENSUITE

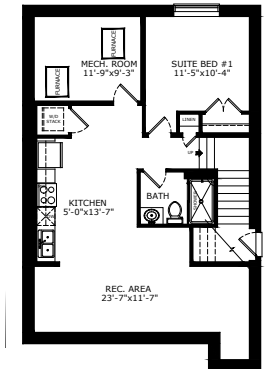


BASEMENT OPTION

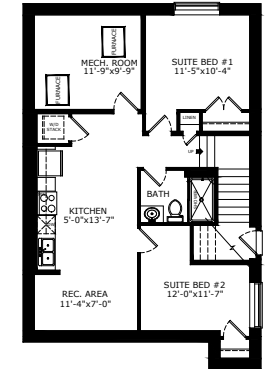
STANDARD 693 SQ FT



1 BEDROOM 'LEGAL SUITE' 705 SQ FT



2 BEDROOM 'LEGAL SUITE' 708 SQ FT



*Legal Suite availability varies by community and municipal regulations.

Build Your Life

STERLINGCALGARY.COM